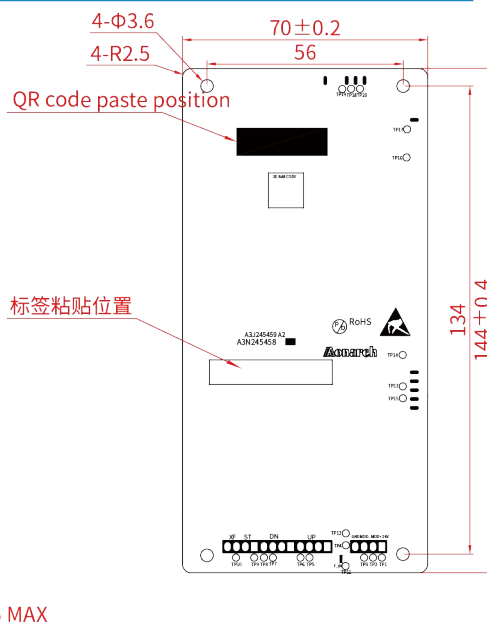
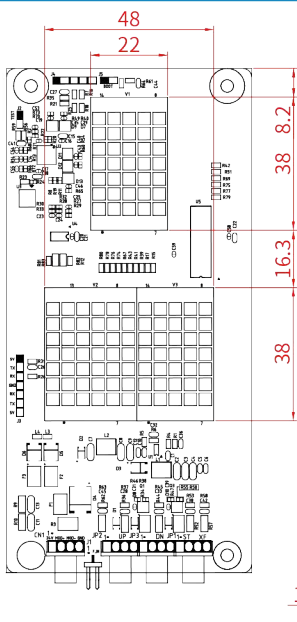


MCTC-HCB-R603

4.3' Red dot-matrix



Dot-matrix Display

Model	Description	display board	appearance and function	colour
MCTC-HCB-R603S		encrypted	the same as MCTC-HCB-R603	red dot matrix

Product feature and advantage:

- Overall size: 70mmX144mmX7.2mm
- Ultra-thin, energy-saving mode and button slight light breathing lamp design, beautiful products
- The installation size and interface are fully compatible with R1, making it easier to upgrade and replace
- Elevator fault quick detect, easy maintenance on site
- Dustproof, moisture proof, anticorrosive, anti vandalism, improve product durability
- Satisfy the three-digit display. When using in the car, set the address as 0 (encrypted authentication), D2, D3, D4, address 1-56 outside the car, DH (for display outside the car)

Input output connector function description:

Connector identification	CN1		CN2		CN3		CN4		CN5
connector type (see Appendix 1)	②								
function	MOD Bus and power interface		Lift UP button connector		Lift Down button connector		Lift fireman lock input		Traditional address jumper wire
Pin definition	1	+24V	24V Power supply	MP24	24V Power supply	MP24	24V Power supply	ST	Lock switch input
	2	MOD+	MOD Communication line	MP24	24V Power supply	MP24	24V Power supply	MP24	24V Power supply
	3	MOD-	MOD Communication line	U-IN	UP button input	D-IN	Down button input	MP24	24V Power supply
	4	GND	Ground	LED-UP	Up button output	LED-DOWN	Down button output	XF	Fire key input

Note: 24V power specification: 18V ≤ voltage ≤ 26V; 485 communication: default baud rate 38400; button light load ≤ 25mA; No-jumper wire by factory default.